

# WKF-W5A LWD VISION RT 500MD

Format: VISION SERVICE RT 500MD

Vertical Scale: 1:500

Graphics File Created: 11-Nov-2009 05:17

## PIP SUMMARY

arcVISION Gamma Ray

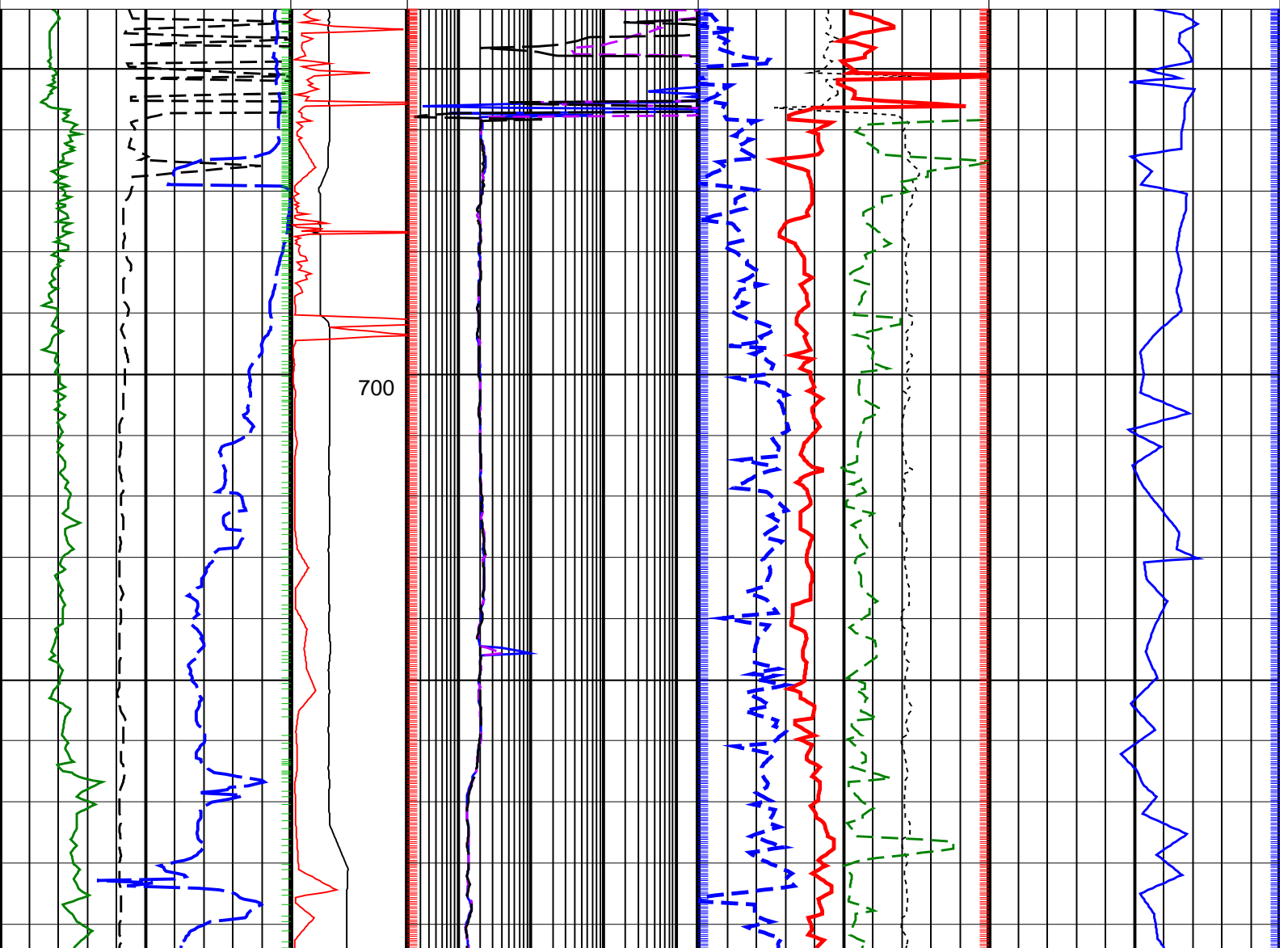
Delta-T Compressional, Real-Time

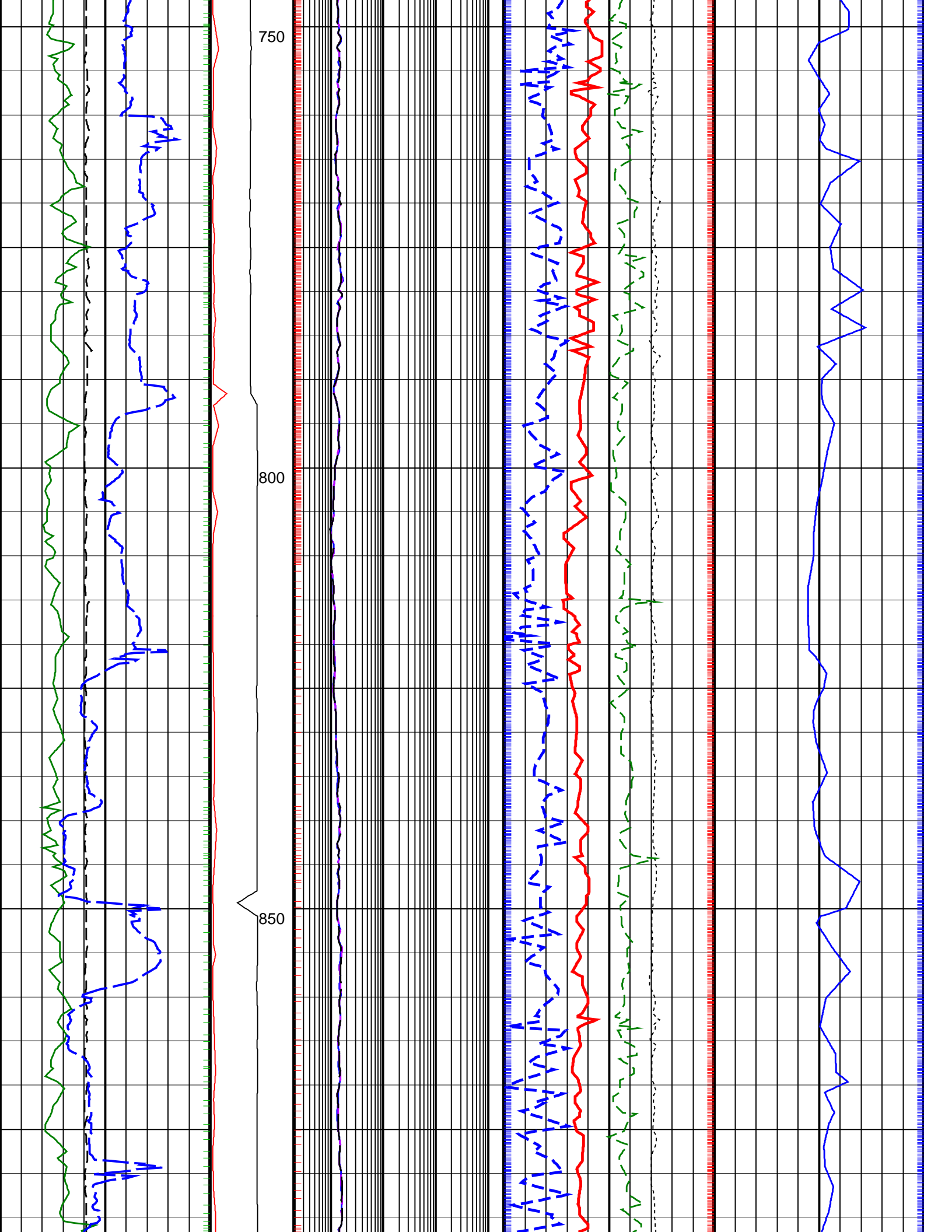
Resistivity

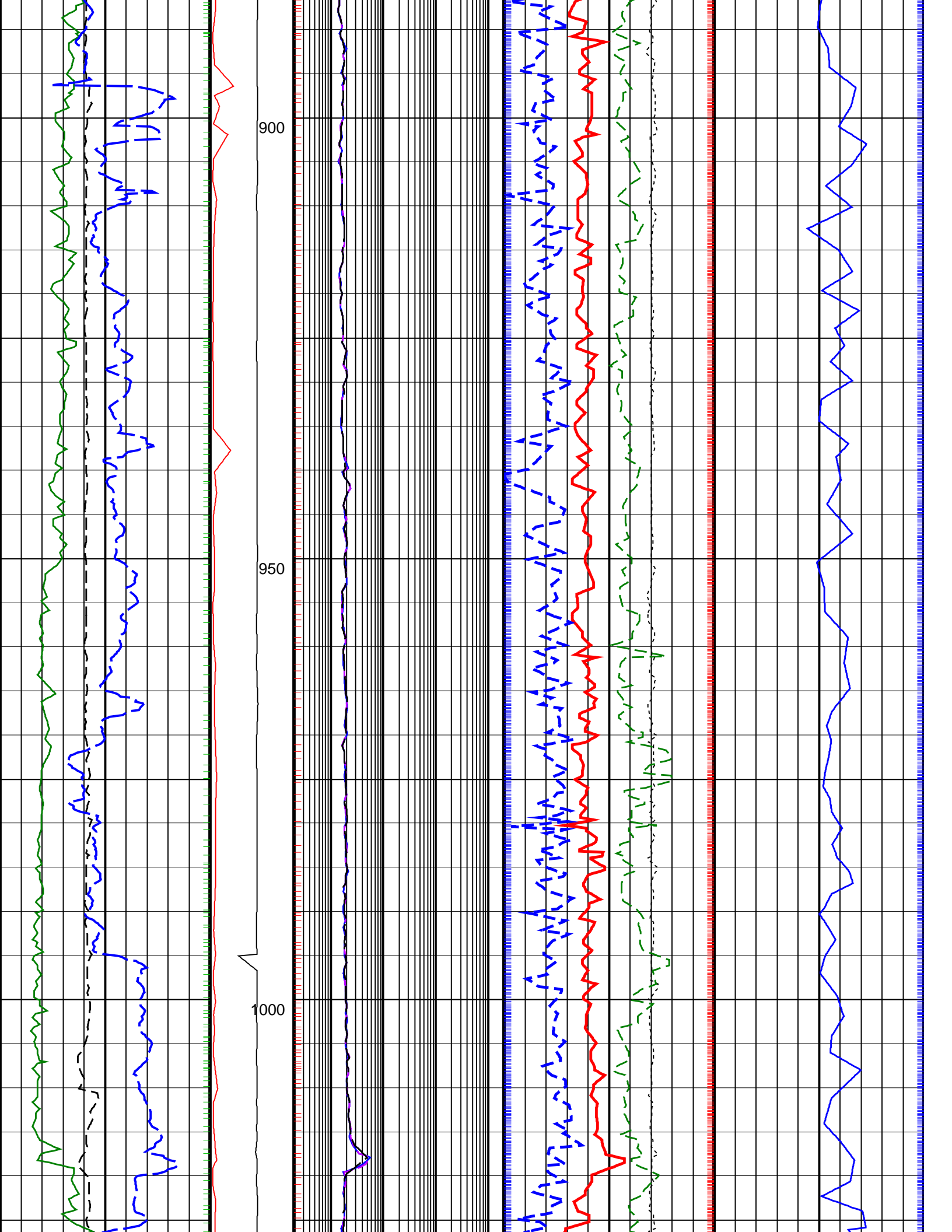
ROBB (Density Bottom)

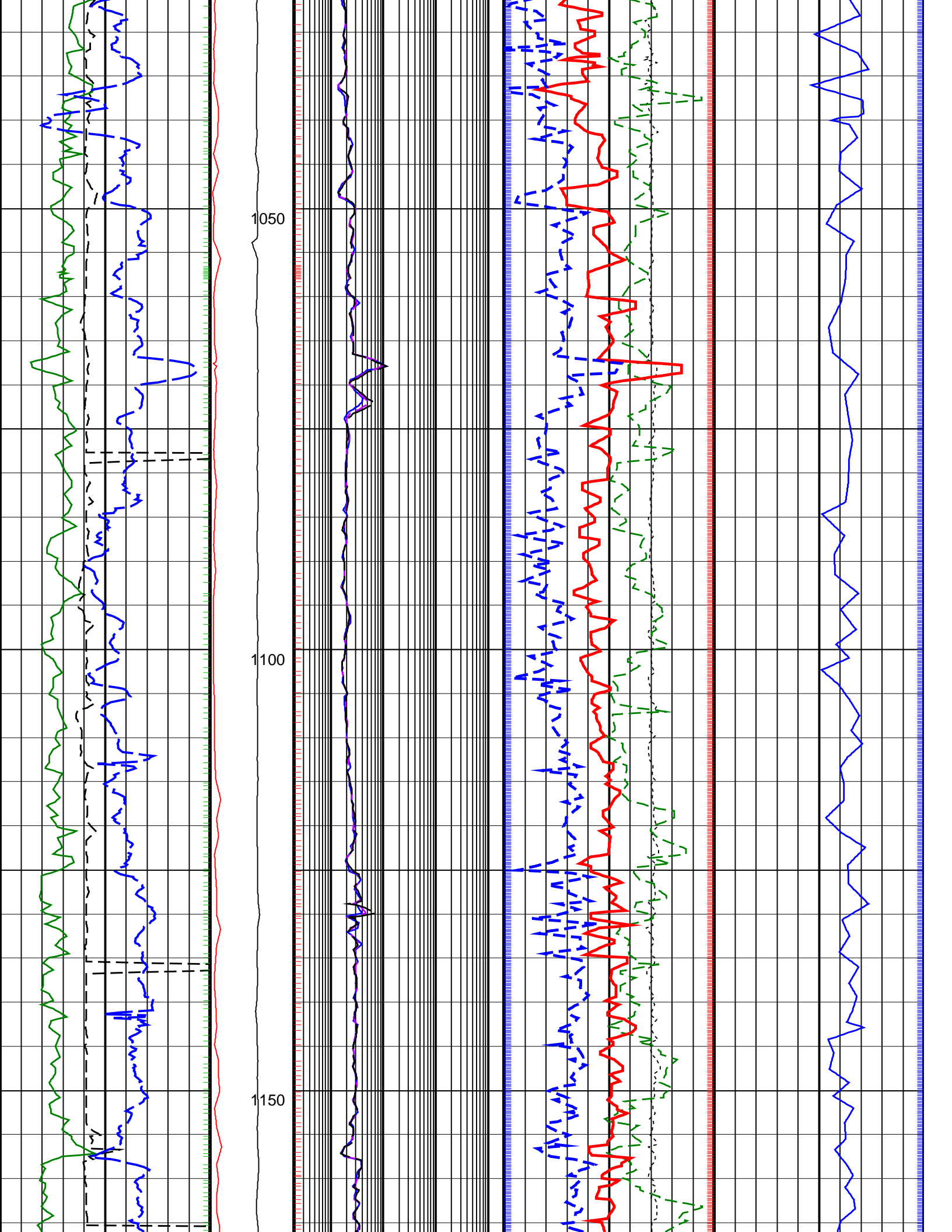
TNPH (Thermal Neutron Porosity)

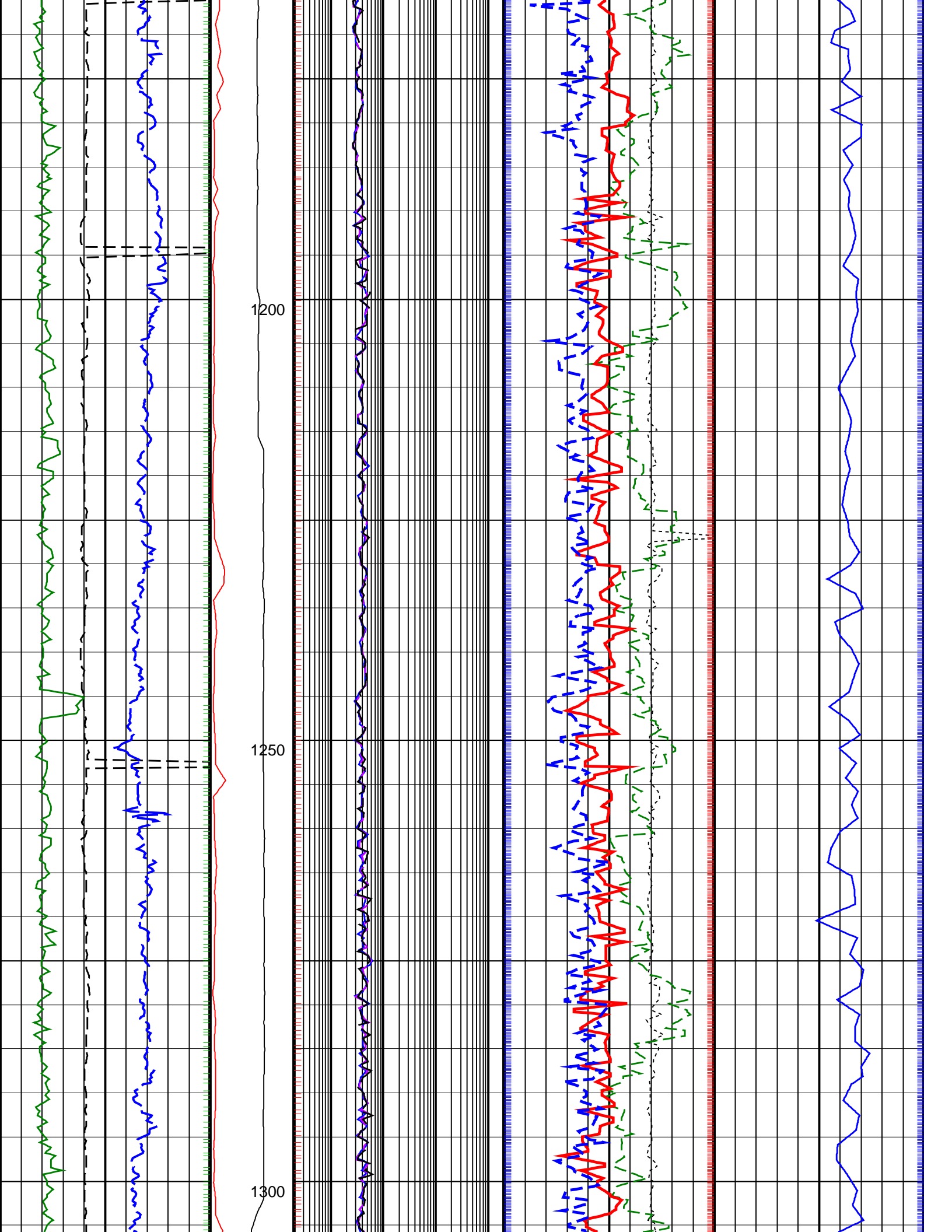
		Thermal Neutron Porosity, Real-Time (TNPH_ADN_RT) 0.45 (V/V) -0.15	
ARC Gamma Ray, Real-Time (ARC_GR_RT) 0 (GAPI) 200		ARC BHCORR Phase-Shift Resistivity 40-in. at 2 MHz, Real-Time (P40H_RT) 0.2 (OHMM) 2000	
		Bulk Density, Bottom, Real-Time Computed Downhole (ROBB_DH_RT) 1.85 (G/C3) 2.85	
Average Borehole Diameter, Real-Time (ADIA_ADN_RT) 6 (IN) 16		ARC BHCORR Phase-Shift Resistivity 28-in. at 2 MHz, Real-Time (P28H_RT) 0.2 (OHMM) 2000	
MWD Collar RPM (CRPM_RT) (RPM) 0 250		Photoelectric Factor, Bottom, Real-Time (PEB_RT) 0 (----) 10	
ROP*5 (ROP5) (M/HR) 200 0		ARC BHCORR Phase-Shift Resistivity 16-in. at 2 MHz, Real-Time (P16H_RT) 0.2 (OHMM) 2000	
PKPK_RPM (Stick_RT) (RPM) 0 250		Bulk Density Correction, Bottom, Real-Time Computed Downhole (DRHB_DH_RT) -0.75 (G/C3) 0.25	
		Delta-T Compressional, Real-Time (DTCO_RT) 600 (US/M) 100	

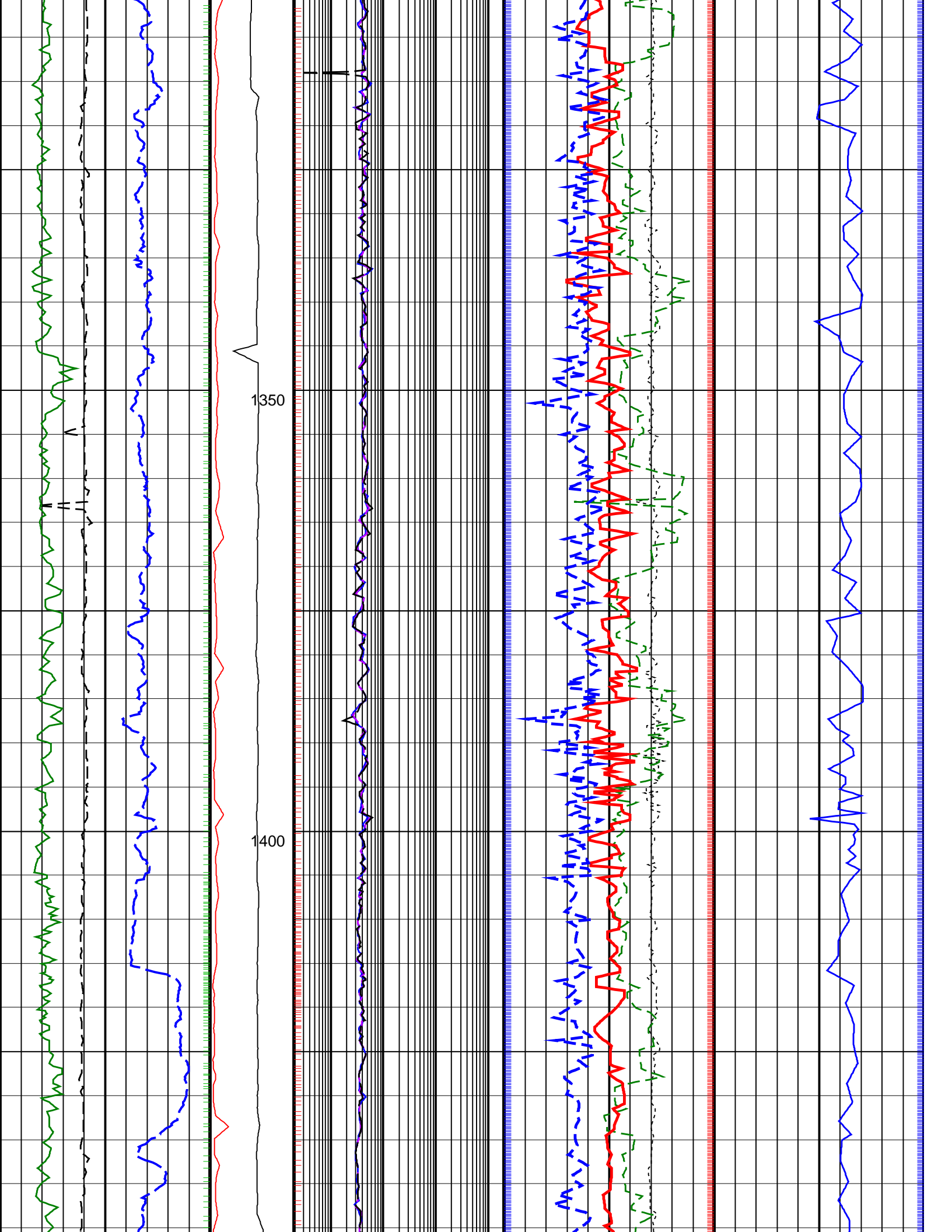


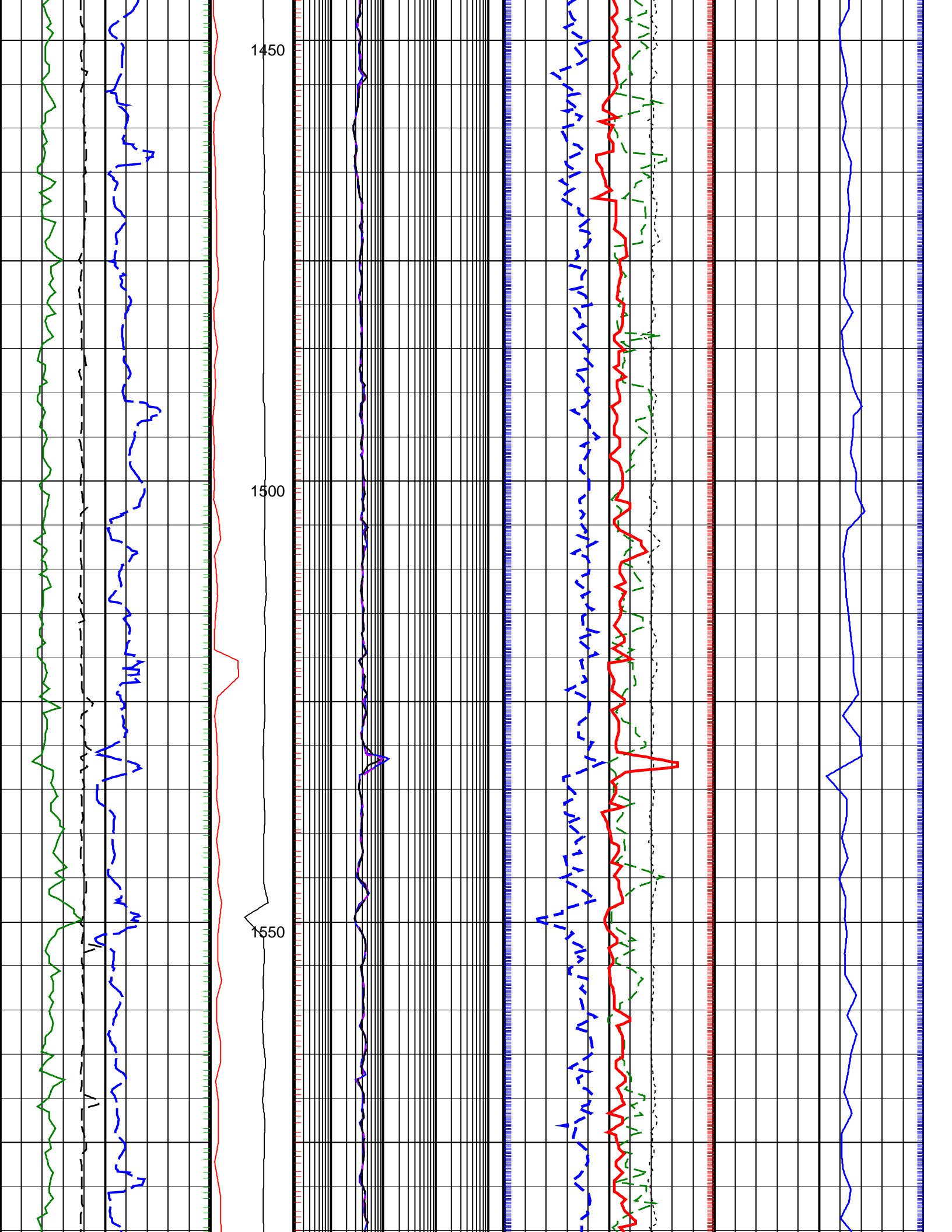


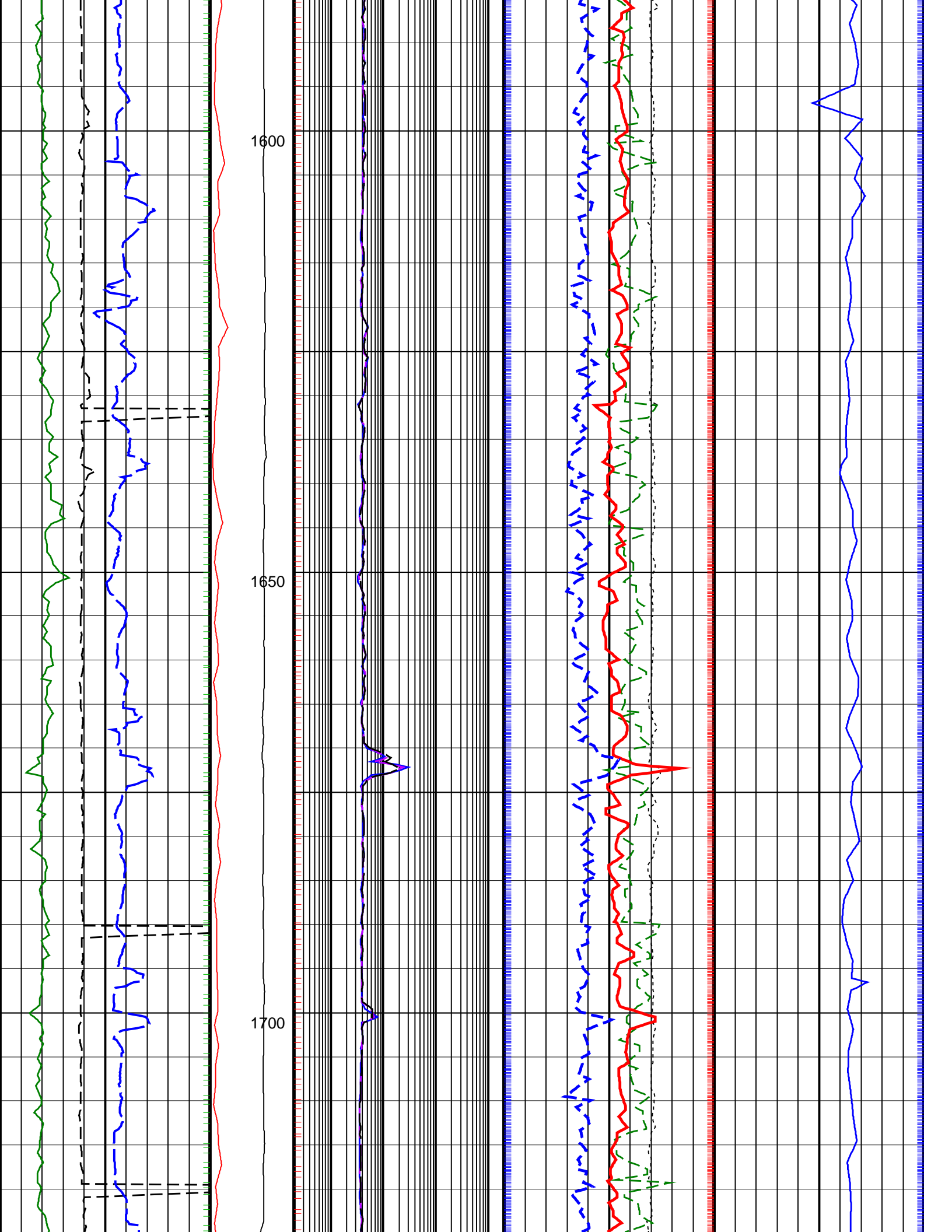




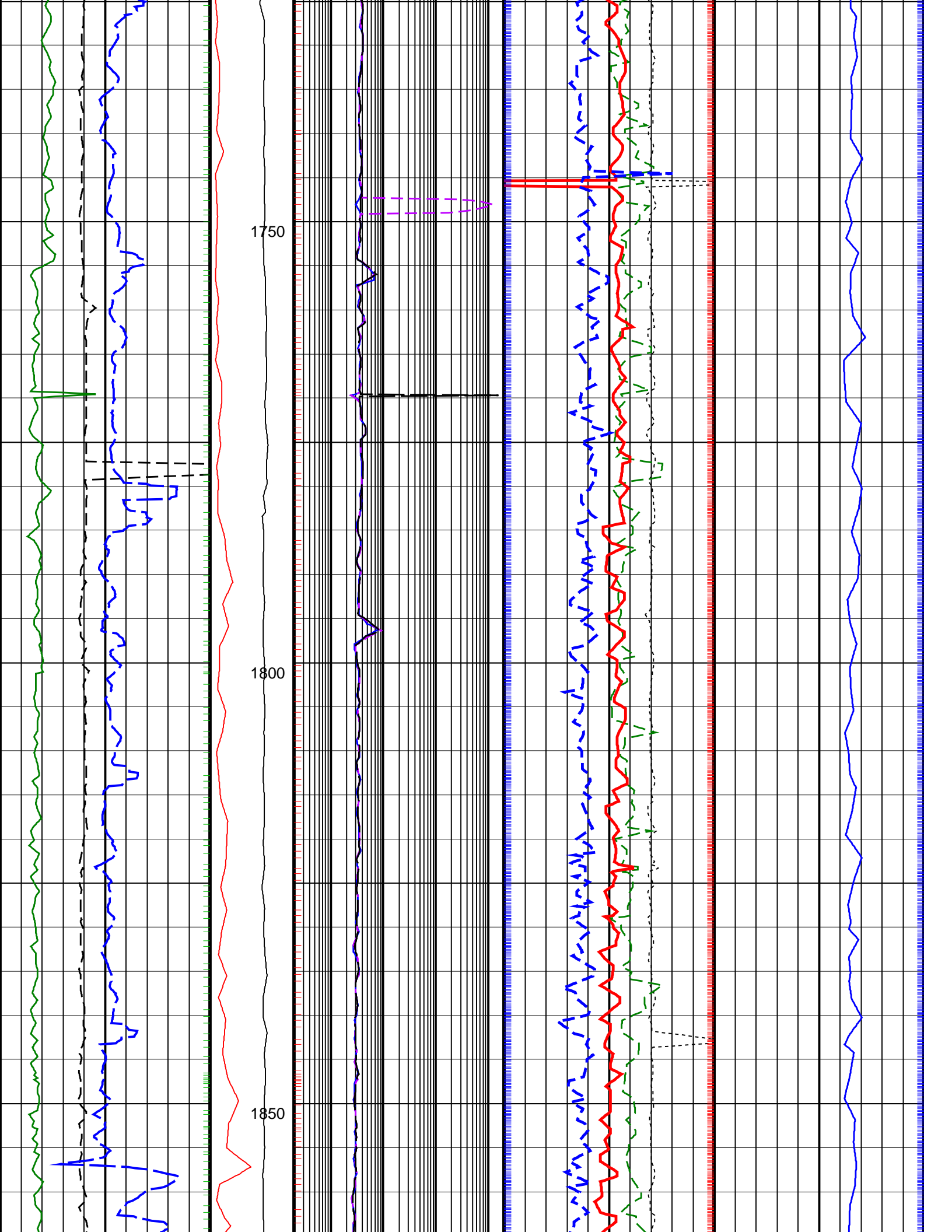


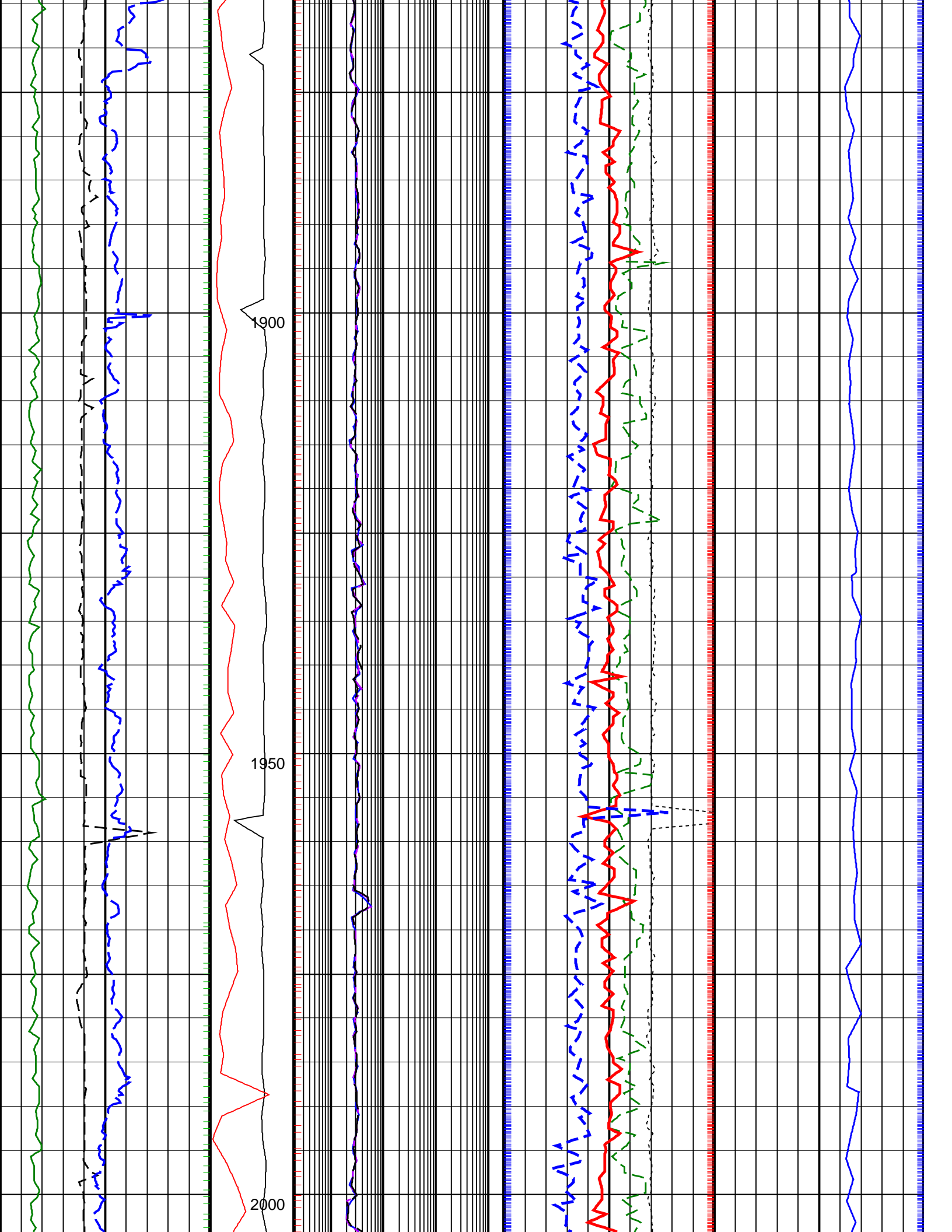


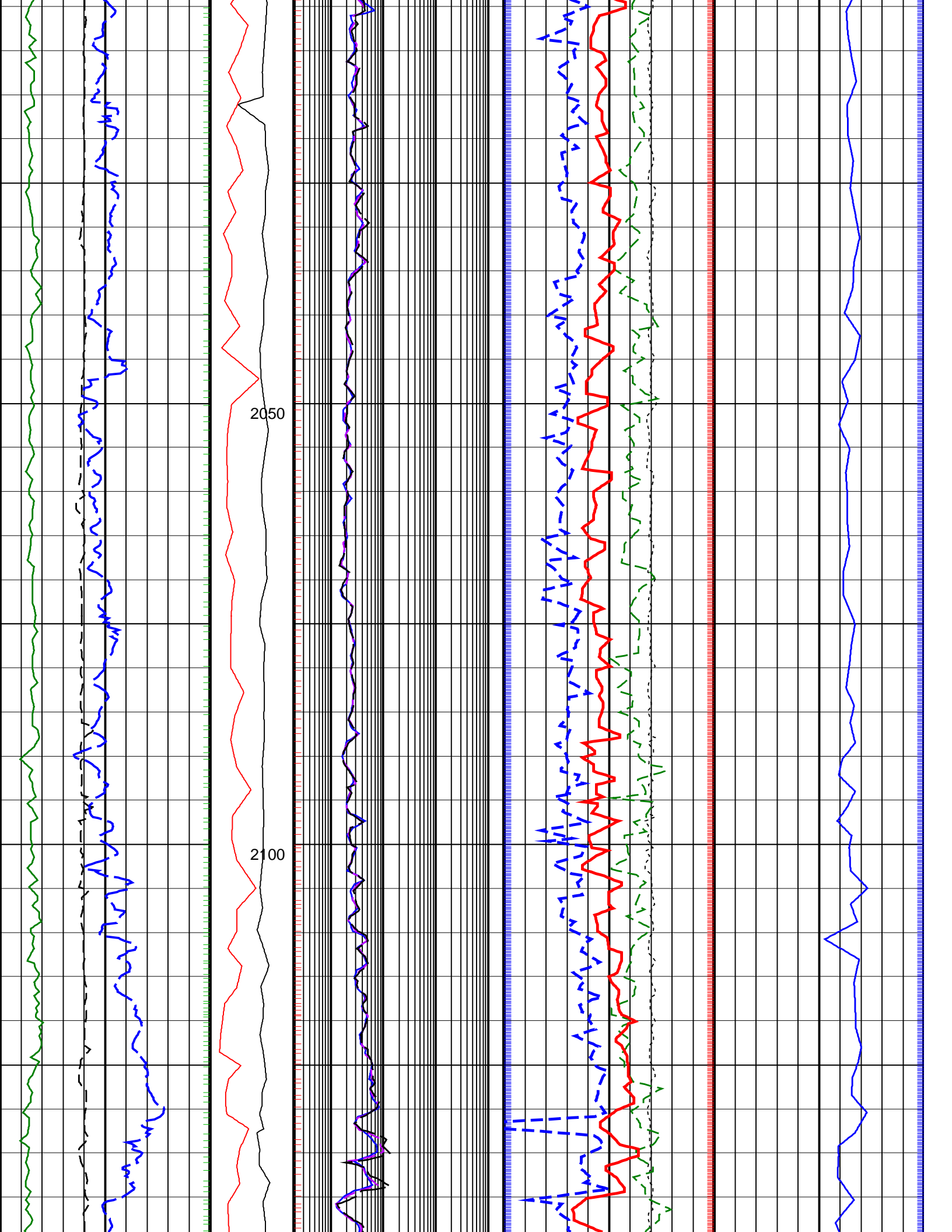


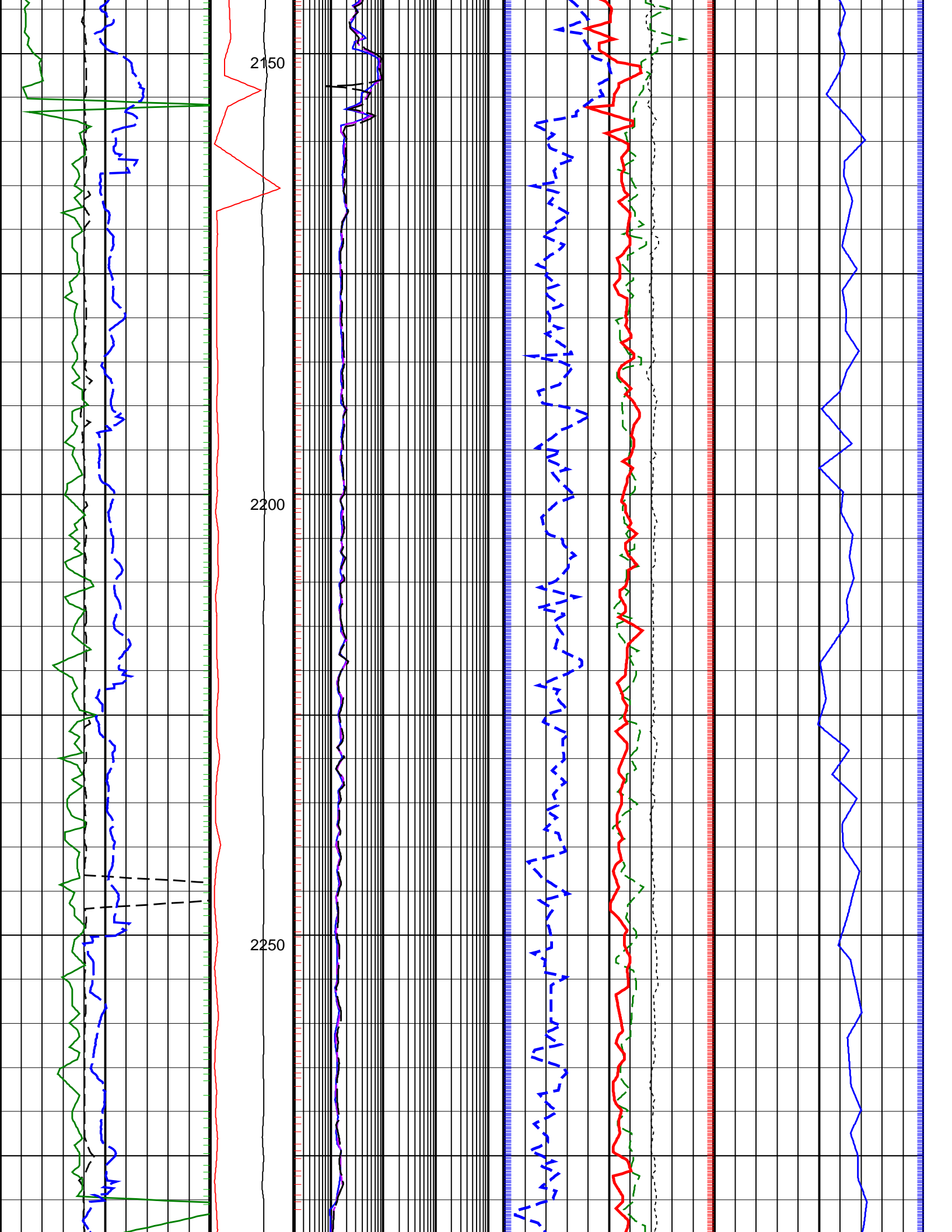


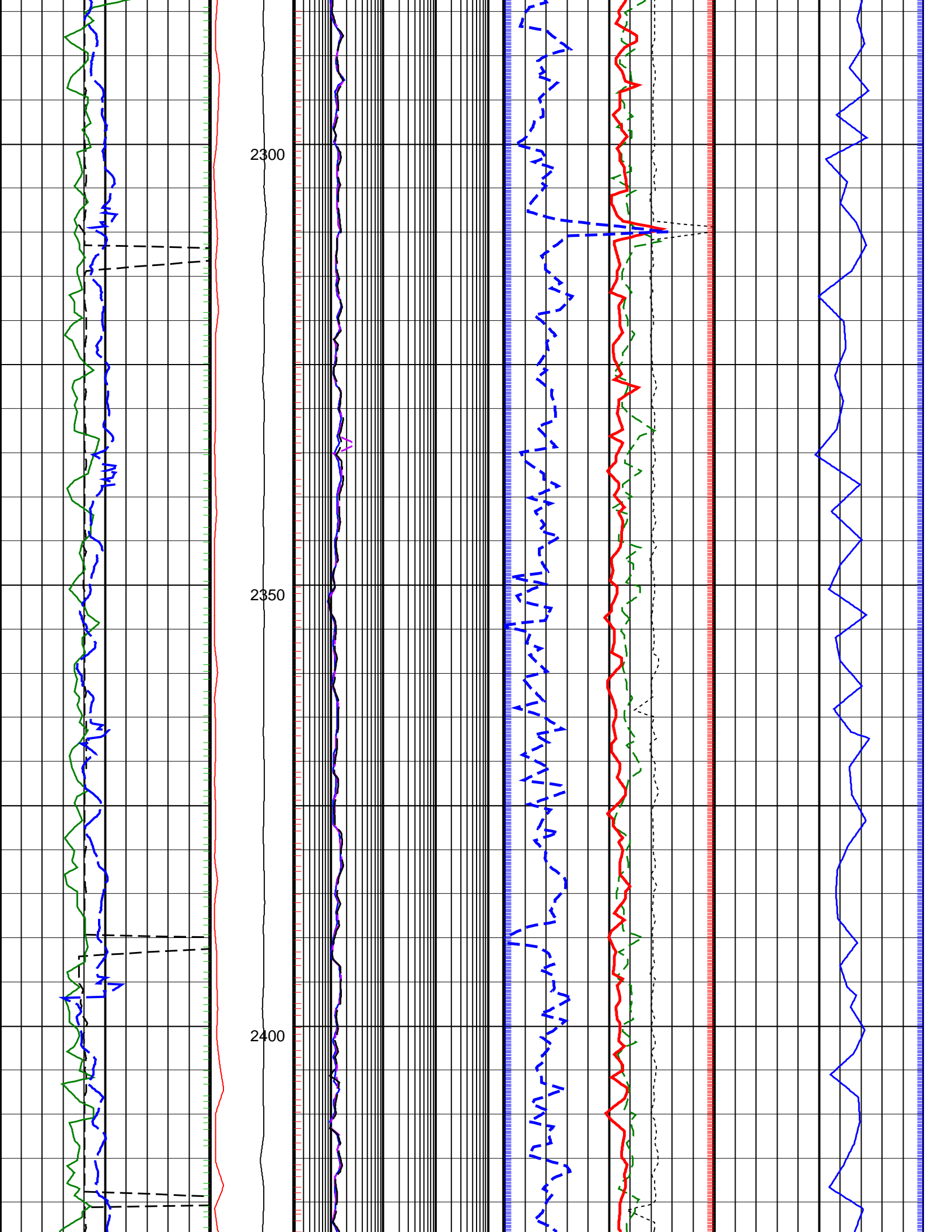


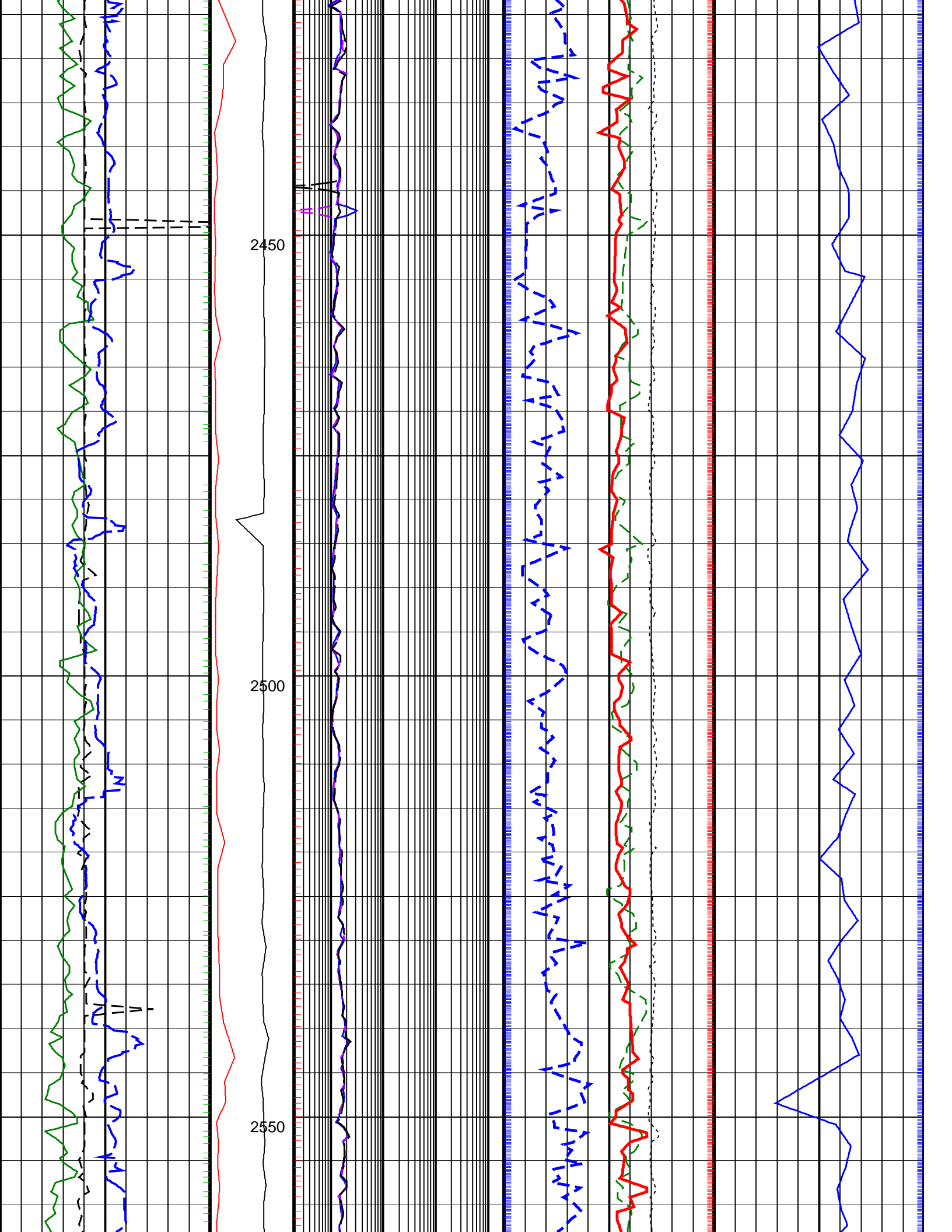


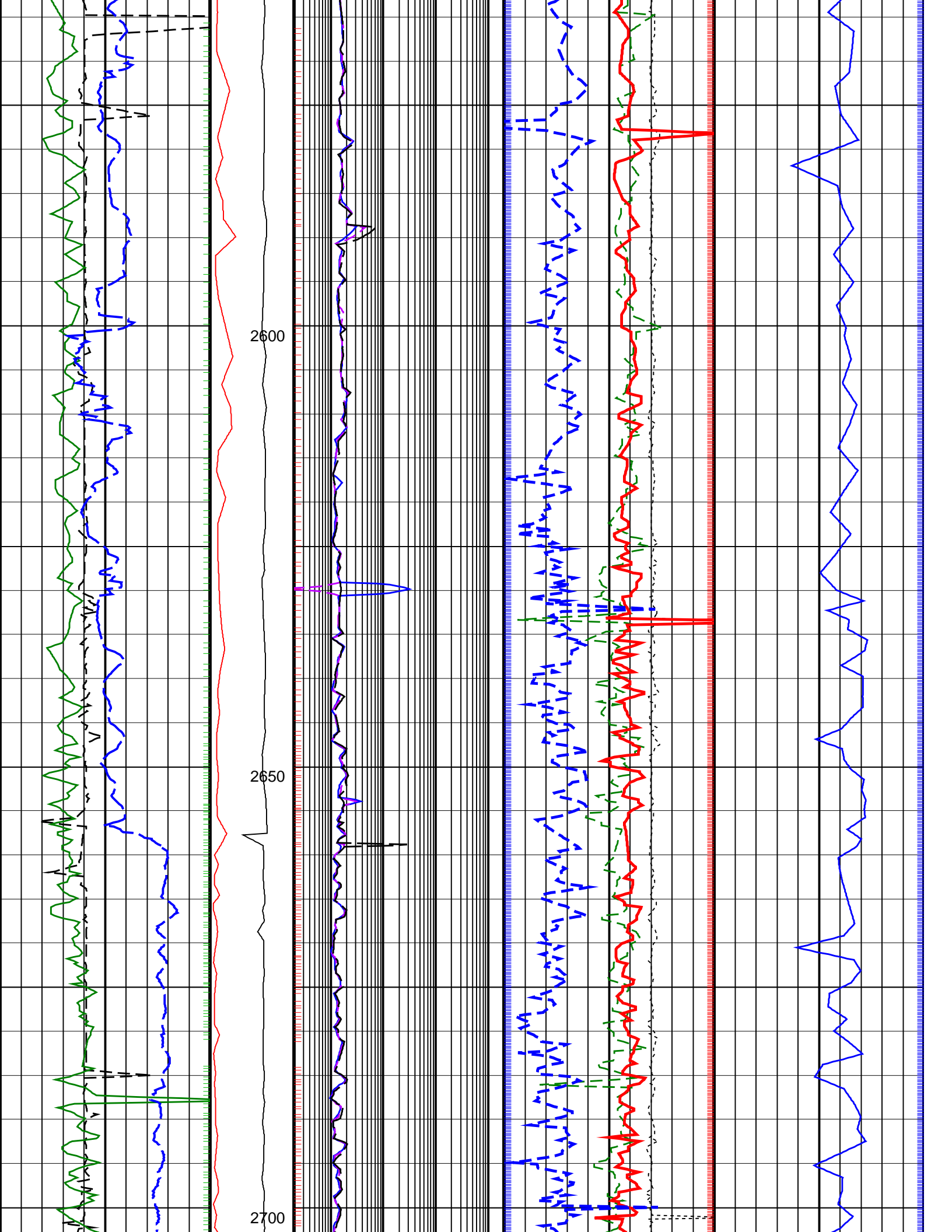


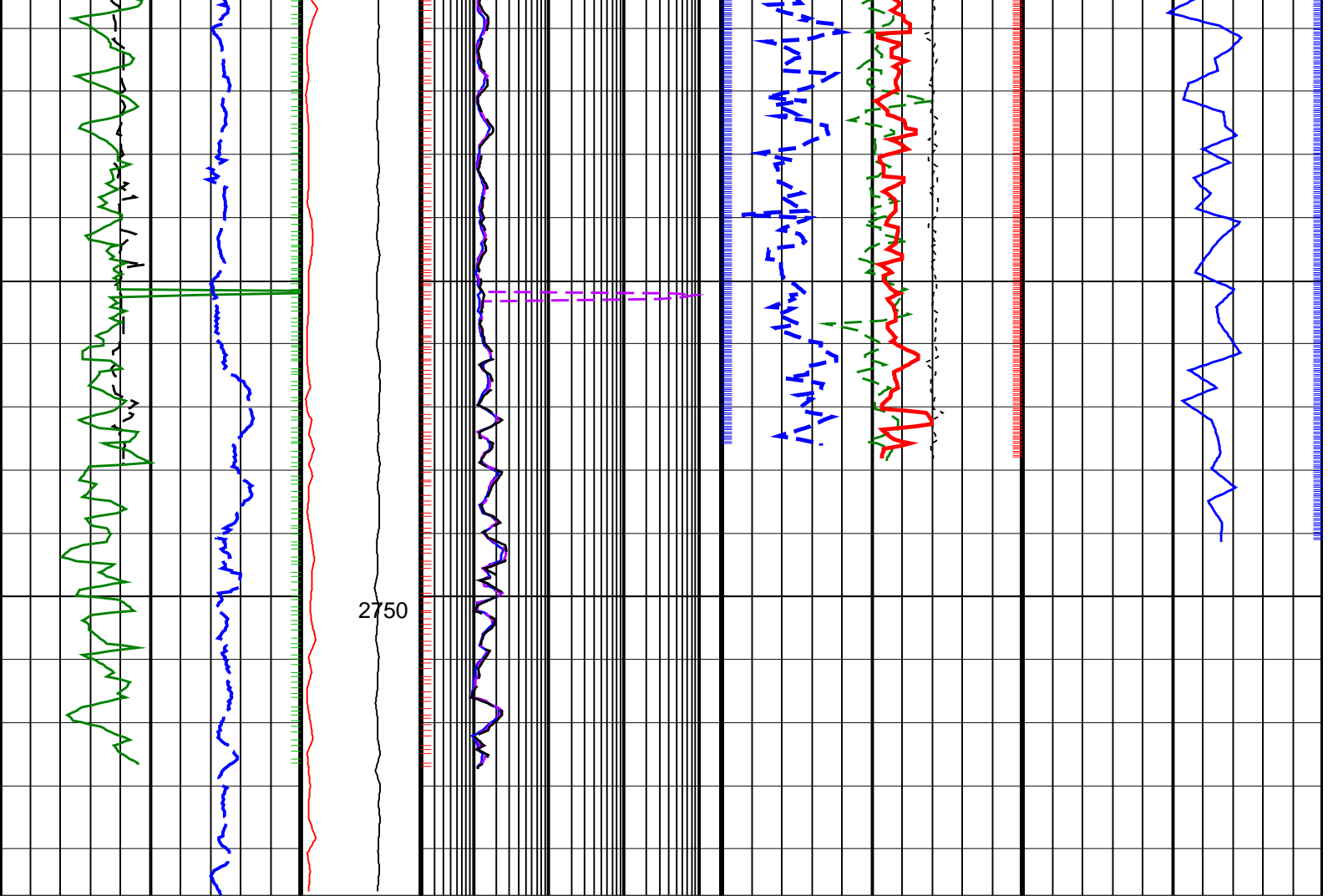












<p><b>ROP*5 (ROP5)</b> (M/HR)</p> <p>0 200</p>	<p><b>PKPK_RPM (Stick_RT)</b> (RPM)</p> <p>0 250</p>	<p><b>ARC BHCorr Phase-Shift Resistivity 16-in. at 2 MHz, Real-Time (P16H_RT)</b> (OHMM)</p> <p>0.2 2000</p>	<p><b>Bulk Density Correction, Bottom, Real-Time Computed Downhole (DRHB_DH_RT)</b> (G/C3)</p> <p>-0.75 0.25</p>	<p><b>Delta-T Compressional, Real-Time (DTCO_RT)</b> (US/M)</p> <p>600 100</p>
<p><b>Average Borehole Diameter, Real-Time (ADIA_ADN_RT)</b> (IN)</p> <p>6 16</p>	<p><b>MWD Collar RPM (CRPM_RT)</b> (RPM)</p> <p>0 250</p>	<p><b>ARC BHCorr Phase-Shift Resistivity 28-in. at 2 MHz, Real-Time (P28H_RT)</b> (OHMM)</p> <p>0.2 2000</p>	<p><b>Photoelectric Factor, Bottom, Real-Time (PEB_RT)</b> (-----)</p> <p>0 10</p>	
<p><b>ARC Gamma Ray, Real-Time (ARC_GR_RT)</b> (GAPI)</p> <p>0 200</p>		<p><b>ARC BHCorr Phase-Shift Resistivity 40-in. at 2 MHz, Real-Time (P40H_RT)</b> (OHMM)</p> <p>0.2 2000</p>	<p><b>Bulk Density, Bottom, Real-Time Computed Downhole (ROBB_DH_RT)</b> (G/C3)</p> <p>1.85 2.85</p>	
			<p><b>Thermal Neutron Porosity, Real-Time (TNPH_ADN_RT)</b> (V/V)</p> <p>0.45 -0.15</p>	

PIP SUMMARY

- ┆ arcVISION Gamma Ray
- ┆ Resistivity
- TNPH (Thermal Neutron Porosity) ┆
- ROBB (Density Bottom) ┆
- Delta-T Compressional, Real-Time ┆